

TIGER ELECTRONICS
INC.®

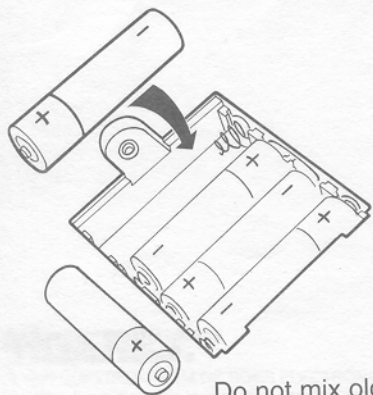
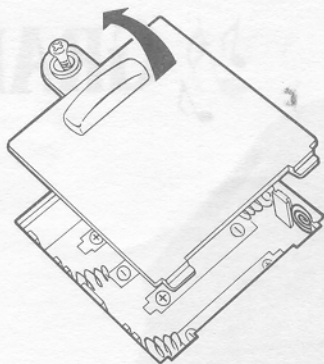


TOUCH 'N PLAY GRAND PIANO™

MODEL NO: 9-008-2
AGES 3-7

The Touch 'n Play Grand Piano provides hours of musical entertainment. This piano features numerous functions including recording capabilities. Following are brief descriptions of all the functions of the TOUCH 'n PLAY GRAND PIANO.

The Touch 'n Play Grand Piano requires 4 "AA" or LR6 batteries that are to be installed at the bottom of the unit. Open the battery door by using a Philips® screwdriver, loosen screw in battery compartment door and pulling back.



Insert batteries according to the diagram provided on the label in the compartment. (Battery installation should be done by adults.)

For proper function:

Do not mix old and new batteries. Do not mix alkaline, standard (carbon - zinc) or rechargeable (nickel - cadmium) batteries.

AUTO POWER
OFF SYSTEM

POWER

ON/OFF



UP



DOWN



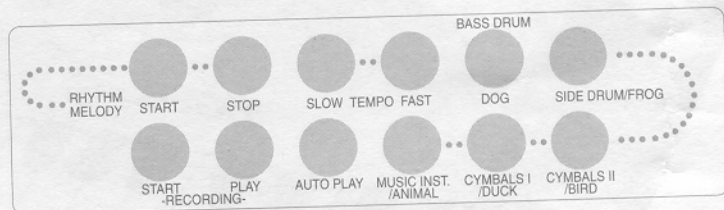
VOLUME

POWER ON/OFF

Press *ON/OFF* to start and stop the unit. The unit also features an *AUTOMATIC* shut-off after 3 minutes of not being played.

VOLUME

Up button will increase the volume. Down button will decrease the volume.



"Rhythm/Melody START & STOP

Push the *START* button, and choose any one of the *BLACK* piano keys to play a specific *RHYTHM*. Then one of the pre-recorded rhythms will automatically play. While one of the *RHYTHMS* is played, you may play any melody along with that *RHYTHM* or you can create your own song.

Auto-playing can be stopped by pushing the *STOP* button. If you want to play one of the 19 built-in melodies, press *START* and press one of the *WHITE* piano keys that has the same number that the unit has listed on the song list. For instance, if you would like to hear “Twinkle, Twinkle Little Star” you press the 8th the white key from the left and the melody will play.

This way you can select songs up to #15, because there are only 15 white keys. After #15, selection cannot be made among 16/17/18/19. These four songs will play automatically in the numerical order when you press the 15th white key.

Tempo SLOW/FAST

Press the *SLOW* or *FAST* buttons to control the beat.

INSTRUMENT/ANIMAL SOUNDS (BASS DRUM/DOG, SIDE DRUM/FROG, CYMBALS I/DUCK, CYMBALS II/BIRD)

When one of these buttons is pressed one time, you will hear the particular percussion sound. Then to hear the animal sound you need to press the *MUSIC/INST/ANIMAL* key before you press any of these buttons. To return to the *INSTRUMENT MODE* need to press the *MUSIC/INST/ANIMAL* key again.

AUTOMATIC PLAY

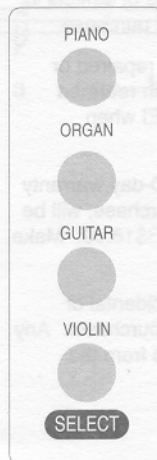
By pressing this button, 19 pre-recorded demo-songs will be played automatically, starting with the first melody through #19. If you do not select any particular song, then auto-playing will continue in the numerical order. In case you want to stop listening to auto-playing, simply press the

AUTO PLAY button again, or press the *STOP* button. Unfortunately, you cannot play along with the pre-recorded melodies.

“Recording START & PLAY” buttons

If you want to record your own song, press the *START* button first and play as you like. After you finish playing, press the *PLAY* button, and you’ll hear your own performance being played back automatically. When you record a second time, the previous recording will automatically be erased. If you want to stop recording, press the *STOP* button, and you’ll have the regular playing function again.

**The duration of recording time is approximately 20 seconds.



DIFFERENT PLAY MODES

The Touch 'n Play Grand Piano can be played in any one of four different modes either *Piano*, *Organ*, *Guitar* or *Violin*. To play in one of these modes simply press one of the corresponding keys for the particular mode.

The Touch 'n Play Grand Piano includes its own microphone so kids can sing along to their songs. The microphone is attached at the bottom of the unit. There is a slot provided marked "Microphone" where the microphone cord is inserted.

Also, included in this book is the music sheets for all 19 built-in nursery rhyme melodies. This will help kids learn how to play these songs and have a better understanding for the notes.

90-DAY LIMITED WARRANTY

Tiger Electronics, Inc. (TEI) warrants to the original consumer purchaser of any of its electronic games or toys that the product will be free of defects in material or workmanship for 90 days from the date of original purchase.

During this 90-day warranty period, the product will either be repaired or replaced (at our option) without charge to the purchaser, when returned either to the dealer with proof of the date of purchase or to TEI when returned prepaid and insured with proof of date of purchase.

Product returned to TEI without original receipt or after the 90-day warranty has expired, but prior to one year from the original date of purchase, will be repaired or replaced (at our option) for a service charge of US\$18.00. Make check or money order payable to : **Tiger Electronics, Inc.**

TEI will not be liable for loss of use of the product or other incidental or consequential costs, expenses, or damages incurred by the purchaser. Any implied warranties are limited in duration to the 90-day period from the original date of purchase.

All product returned must be shipped prepaid and insured for loss or damage to:

Tiger Electronics, Inc. Repair Dept.
980 Woodlands Parkway
Vernon Hills, Illinois 60061 U.S.A.

1. Pack the product carefully in the original box or use a good-quality carton with packing materials.
2. Include a letter with a complete description of the defect, a check if product is beyond the 90-day warranty, and your printed name, address and telephone number.

This warranty gives you specific legal rights and you may also have other rights which vary from state to state so the foregoing limitations may not apply to you. This warranty does not cover damages resulting from accident, unreasonable use, negligence, improper service or other causes not arising out of defects in material or workmanship.

Jingle Bells


G



Jin - gle bells, jin - gle bells, jin - gle all the way,

The first line of musical notation is on a single staff in G major (one sharp). It consists of eight measures. The first measure is a whole note chord G4. The second measure is a quarter note G4 followed by a quarter note B4. The third measure is a quarter note D5 followed by a quarter note B4. The fourth measure is a quarter note G4 followed by a quarter note B4. The fifth measure is a quarter note G4 followed by a quarter note B4. The sixth measure is a quarter note G4 followed by a quarter note B4. The seventh measure is a quarter note G4 followed by a quarter note B4. The eighth measure is a quarter note G4 followed by a quarter note B4.

Am G D7 G



Oh what fun it is to ride in a one-horse o - pen sleigh!

The second line of musical notation is on a single staff in G major (one sharp). It consists of eight measures. The first measure is a whole note chord Am. The second measure is a quarter note G4 followed by a quarter note B4. The third measure is a quarter note D5 followed by a quarter note B4. The fourth measure is a quarter note G4 followed by a quarter note B4. The fifth measure is a quarter note G4 followed by a quarter note B4. The sixth measure is a quarter note G4 followed by a quarter note B4. The seventh measure is a quarter note G4 followed by a quarter note B4. The eighth measure is a whole note chord G4.

Happy Birthday

Musical notation for the first line of the song. The staff is in 3/4 time with a key signature of one flat (Bb). The melody consists of quarter notes: C4, Bb3, A3, G3, F3, E3, D3, C3. Chords are indicated above the staff: F (F3, A3, C4) for the first three notes, C7 (C3, E3, G3, Bb3) for the next three notes, and F (F3, A3, C4) for the final two notes.

Happy birthday to you, Happy Birthday to you, Happy

Musical notation for the second line of the song. The staff continues the melody with quarter notes: Bb3, A3, G3, F3, E3, D3, C3. Chords are indicated above the staff: F (F3, A3, C4) for the first two notes, Bb (Bb3, D4, F4) for the next two notes, Gm (G3, Bb3, D4) for the next two notes, F (F3, A3, C4) for the next note, C7 (C3, E3, G3, Bb3) for the next note, and F (F3, A3, C4) for the final note.

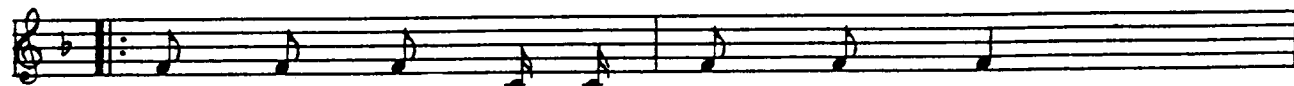
Birthday to you, Happy Birthday to you.

Old MacDonald

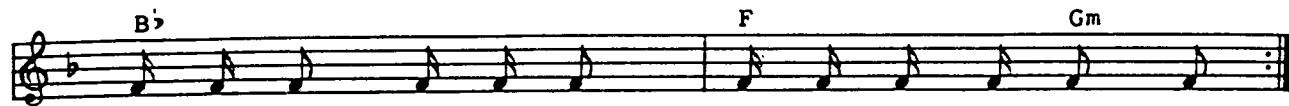
Musical notation for the first line of the song. It features a treble clef, a key signature of one flat (Bb), and a 2/4 time signature. The melody consists of quarter notes. Above the staff, the chords F, Bb, and F are indicated. The lyrics are: Old Mac - Don - ald had a farm,

Musical notation for the second line of the song. It features a treble clef, a key signature of one flat (Bb), and a 2/4 time signature. The melody consists of quarter notes. Above the staff, the chords G, C, and F are indicated. The lyrics are: E - I - E - I - O; And on his farm he

Musical notation for the third line of the song. It features a treble clef, a key signature of one flat (Bb), and a 2/4 time signature. The melody consists of quarter notes. Above the staff, the chords Bb, F, G7, C7, and F are indicated. The lyrics are: had a cow, E - I - E - I - O; With a



moo - moo here and a^d moo - moo there,



here a moo, there a moo, ev - 'ry - where a moo - moo,



Old Mac -Don -ald had a farm, E - I - E - I - O.

Mary Had a Little Lamb

Musical notation for the first line of the song. The key signature is one flat (Bb) and the time signature is 2/4. The melody is written on a treble clef staff. The lyrics are: Ma - ry had a lit - tle, lamb, lit - tle lamb, lit - tle lamb,.

F C7 F

Ma - ry had a lit - tle, lamb, lit - tle lamb, lit - tle lamb,

Musical notation for the second line of the song. The key signature is one flat (Bb) and the time signature is 2/4. The melody is written on a treble clef staff. The lyrics are: Ma - ry had a lit - tle lamb, its fleece was white as snow.

F C7 F

Ma - ry had a lit - tle lamb, its fleece was white as snow.

Merry Go Round



Are You Sleeping?

1 F 2

Are you sleeping, Are you sleeping, Brother John? Brother John?

3 F 4

Morning bells are ringing, Morning bells are ringing, Ding dang dong, Ding dang dong.

Row, Row, Row Your Boat

1 C 2 C

Row, row, row your boat, Gent - ly down the stream:___

3 C

Mer - ri - ly, mer - ri - ly, mer - ri - ly, mer - ri - ly,

4 C G C

Life is but a dream._____

Twinkle, Twinkle, Little Star



Twin-kle, twin-kle, lit - tle star,³ How I won - der what you are.



Up a - bove the world so high, Like a dia - mond in the sky.



Twin-kle, twin-kle, lit - tle star, How I won - der what you are.

Swanee River



Way down upon de Swanee riber, Far, far a - - way,



Dere's wha my heart is turning ebber, Dere's wha de old folks stay.



All up and down de whole cre-ation, Sad ---- ly I roam,



Still longing for de old plan ta - tion, And for de old folks at home.



All de world am sad and dreary, Eb - ry where I roam,



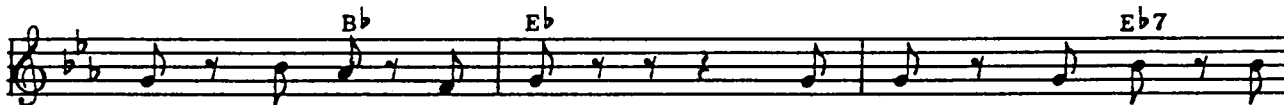
Oh! darkeys how my heart grows weary, Far from de old floks at home.

Hickory Dickory Dock



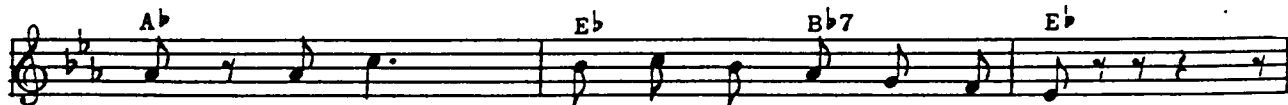
Hick - o - ry, Dick - o³ - ry, Dock!

The



mouse ran up the clock;

The clock struck one, and



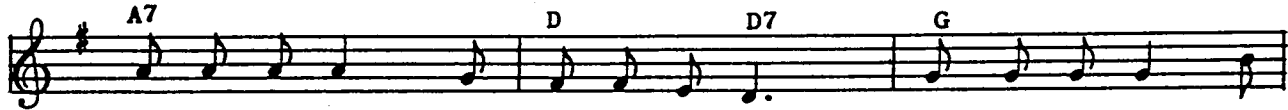
down he run,

Hick - o - ry, Dick - o - ry, Dock!

The Mulberry Bush



Here we go round ♪ The Mul - ber - ry Bush, The

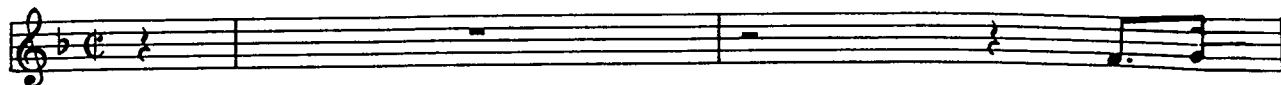


Mul - ber - ry Bush, The Mul - ber - ry Bush, Here we go round The



Mul - ber - ry Bush so ear - ly in ___ the morn - ing.

Polly Wolly Doodle



,

Oh, I



went down South for to see my Sal, Sing-ing pol-ly-wol-ly-doo-dle at the



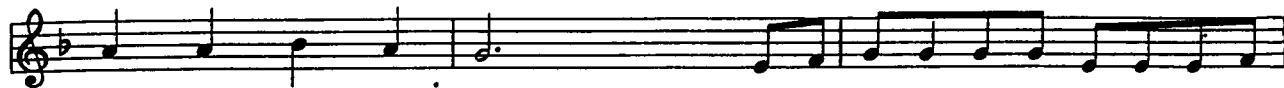
day.

My___ Sal she is a punk - y ga, Sing-ing



pol-ly wol-ly doo-dle all the day. ♪

Fare thee



well, my fair - y fay,


For I'm goin' to Lou' - si - an - a for to



see my Su-zi-an-na, Sing-ing pol-ly wol-ly doo-dle all the day.

Looby Loo

F C7



Here we go loo - by loo, _____, Here we go loo - by light. _____

F C7 F



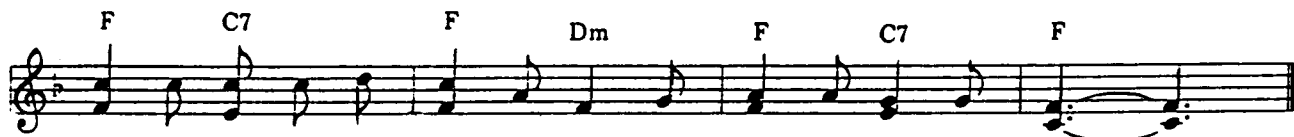
Here we go loo - by loo, _____ All on a Sat - ur - day night. _____ I

F



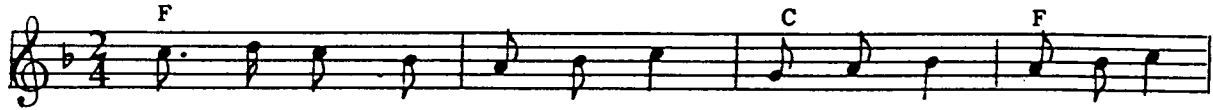
put my right hand in, _____ I put my right hand out, _____ I

F C7 F Dm F C7 F



give my right hand a shake,shake,shake,And turn my - self a - bout. _____

London Bridge



Lon - don Bridge is fall - ing down, fall - ing down, fall - ing down,



Lon - don Bridge is fall - ing down, My fair la - dy.

Three Blind Mice

Musical notation for the first line of the song. It consists of a single staff in treble clef with a key signature of one flat (B-flat). The melody is written in a simple, folk-like style. Above the staff, the chords C, G, C, G, and C are indicated. The lyrics are: Three Blind Mice, Three Blind Mice,

Musical notation for the second line of the song. It consists of a single staff in treble clef with a key signature of one flat (B-flat). The melody continues from the first line. Above the staff, the chords G, C, G, and C are indicated. The lyrics are: See how they run, See how they run! They

Musical notation for the third line of the song. It consists of a single staff in treble clef with a key signature of one flat (B-flat). The melody continues from the second line. Above the staff, the chords G, C, G, C, and G are indicated. The lyrics are: all run af - ter the farm - er's wife; She cut off their tails with a

carv - ing knife, Did ev - er you see such a

sight in your life as Three Blind Mice.

Pop Goes the Weasel



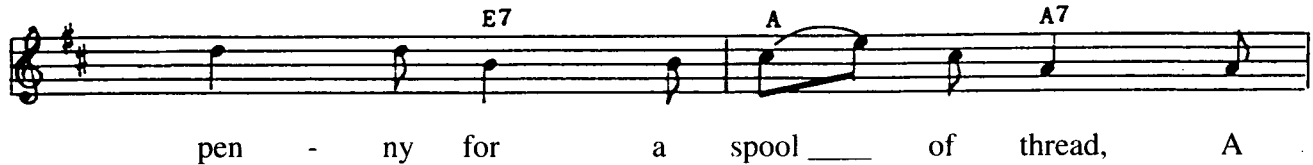
D A7 D

All a - round the cob - bler's bench The



A7 D A7

mon - key chased the wea - sel. The mon - key thought it was



E7 A A7

pen - ny for a spool of thread, A

D G A D

all --- in fun. Pop! Goes The Wea - sel. A

Detailed description: A musical staff in treble clef with a key signature of one sharp (F#). The staff contains four measures of music. Above the staff, the chords D, G, A, and D are written above the first, second, third, and fourth measures respectively. The notes are: Measure 1: D4 (quarter), E4 (quarter), F#4 (quarter), D4 (half). Measure 2: G4 (quarter), A4 (quarter), B4 (quarter), G4 (half). Measure 3: A4 (quarter), B4 (quarter), C#5 (quarter), A4 (half). Measure 4: D5 (quarter), C#5 (quarter), B4 (quarter), D4 (half).

Bm F#m G

pen - ny for a nee - dle, That's the way the

Detailed description: A musical staff in treble clef with a key signature of one sharp (F#). The staff contains three measures of music. Above the staff, the chords Bm, F#m, and G are written above the first, second, and third measures respectively. The notes are: Measure 1: B3 (quarter), A3 (quarter), G3 (quarter), B3 (half). Measure 2: F#4 (quarter), E4 (quarter), D4 (quarter), F#4 (half). Measure 3: G4 (quarter), A4 (quarter), B4 (quarter), G4 (half).

Bm G A7 D

mon - ey goes, Pop! Goes The Wea - sel.

Detailed description: A musical staff in treble clef with a key signature of one sharp (F#). The staff contains four measures of music. Above the staff, the chords Bm, G, A7, and D are written above the first, second, third, and fourth measures respectively. The notes are: Measure 1: B3 (quarter), A3 (quarter), G3 (quarter), B3 (half). Measure 2: G4 (quarter), A4 (quarter), B4 (quarter), G4 (half). Measure 3: A4 (quarter), B4 (quarter), C#5 (quarter), A4 (half). Measure 4: D5 (quarter), C#5 (quarter), B4 (quarter), D4 (half).

Rock-a-bye Baby



Rock - a - bye Ba - by, on the tree top,



When the wind blows, the crad - le will rock,




When the bough breaks, the crad - le will fall,



Down will come ba - by, crad - le and all.

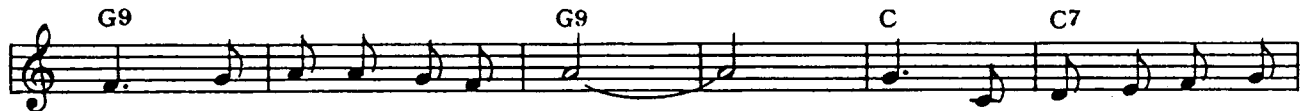
Do Re Me Song



Doe --- a deer, a fe - male deer, Ray --- a drop of gold - en



sun, _____ Me --- a name I call my - self,



Far --- a long, long way to run. _____ Sew --- a nee - dle pull - ing

F D7 G

thread, _____ La --- a note to fol - low sew, _____

E7 Am C7 F Dm7

Tea --- a drink with jam and bread _____ That will bring us

G7 C G

back to do - oh - oh - oh!

Joy To The World

Musical staff with lyrics and chords: Joy to the world! the Lord is come; Let

Chords: D, G, D, Emin, D, A', D

Musical staff with lyrics and chords: earth receive her King; Let

Chords: G, A, D

Musical staff with lyrics and chords: ev - 'ry heart pre - pare Him room And

Chords: D, D, D, D

D D A A'

heav'n and na - ture sing, And heav'n and nature ___ sing, And

D G D Emin D A' D

heav'n ___ and heav'n _____ and na - ture sing.

TIGER ELECTRONICS
INC.®

© 1995 COPYRIGHT & TM OF TIGER ELECTRONICS, INC.

980 Woodlands Parkway, Vernon Hills, Illinois 60061, USA

© 1995 TIGER ELECTRONICS (UK) LLC.

Belvedere House, Victoria Avenue, Harrogate, North Yorkshire HG1 1EL, England

90082IWTIE-2
PRINTED IN HONG KONG